



Autonomous Solar Street Light

BELLE EPOQUE TWIN SMARTLIGHT

Project:

Notes:

2	[BELLE	-	-	-]-	[-	-	-]-	-	-	-	-	-	-	-	-	-	-	-	-
	Fixture	Temp	Type	Solar	Power Center	Option				Pole				Color (Pole)							Color (Fixture)	Tilt Panel

The Most Reliable Solar Lighting in the World

We keep our solutions simple with Smartlight—one proven, powerful solar light that meets a wide range of needs. Its unique black solar panel looks elegant, day or night. No hanging wires or bulky battery box. No solar panel that looks like a high school science project. We use powerful components and smart controls to provide all the energy you need in a sleek package, so you can count on all-night lighting all year around.

175,000

SmartLight Systems Installed Worldwide

365

Nights of Lighting per Year Guaranteed

5 Years

Warranty, Including the Battery With No Pro-Rating

\$0

Zero Trenching Cost, Zero Electric Bills and Zero Maintenance for 10 Years



BELLE EPOQUE TWIN SMARTLIGHT



LUMINAIRE PRODUCT CODE	NAME	COLOR TEMP	DISTRIBUTION	COLOR	WEIGHT	EPA	DIMENSIONS
2[BELLE	Twin Belle Epoque	2.7K, 3K,4K	T2, T3, T4	Sable	21 LBS.	1.61	20.5" H x 17.5" W x 17.5" D
Custom							

SOLAR MODULE ASSEMBLY PRODUCT CODE / DESCRIPTION		DIMENSIONS SOLAR MODULE	MODULE FRAME & BACK SHEET
P160F	160W PolyCrystalline Solar Module with Steel Mount - Tilt Adjustment (0,10,25 or 45 Degree) Mount Galvanized and Powder Coated. IEC 61730-1:2019 and IEC 61215-2:2017 Includes Hydrophobic Coating	43.31 x 33.46 x 1.57	Black
P270F	270W PolyCrystalline Solar Module with Steel Mount - Tilt Adjustment (0,10,25 or 45 Degree) Mount Galvanized and Powder Coated. IEC 61730-1:2019 and IEC 61215-2:2017 Includes Hydrophobic Coating	66.93 x 40.55 x 1.81	Black
P310F	305W PolyCrystalline Solar Module with Steel Mount - Tilt Adjustment (0,10,25 or 45 Degree) Mount Galvanized and Powder Coated. IEC 61730-1:2019 and IEC 61215-2:2017 Includes Hydrophobic Coating	66.93 x 42.13 x 1.57	Black

Heavy Duty Mount Adder (Required with 45 degree tilt)	
HW-MC	Heavy Duty Mount Galvanized with Marine Powder Coat Upgrade - Powder Coated Black

POWER 365 ASSEMBLY PRODUCT CODE / DESCRIPTION		BATTERIES	
2P	Power 365 Power Center with 624 Wh NiMH Battery Capacity-IP65	Chemistry	Nickel Metal Hydride
3P	Power 365 Power Center with 936 Wh NiMH Battery Capacity-IP65	Operating Temperature	-40°F to +158°F (-40°C to +70°C)
4P	Power 365 Power Center with 1248 Wh NiMH Battery Capacity-IP65	Warranty	5 Year Full Replacement
		Certifications	EN 550 14-1 ; EN 55014-2 ; EN 61000-6-2 ; EN 61000-6-3

Controller	
Battery Management System (BMS)	
Anti-Black Out Control	
3-Level Programmable Lighting Profiles	

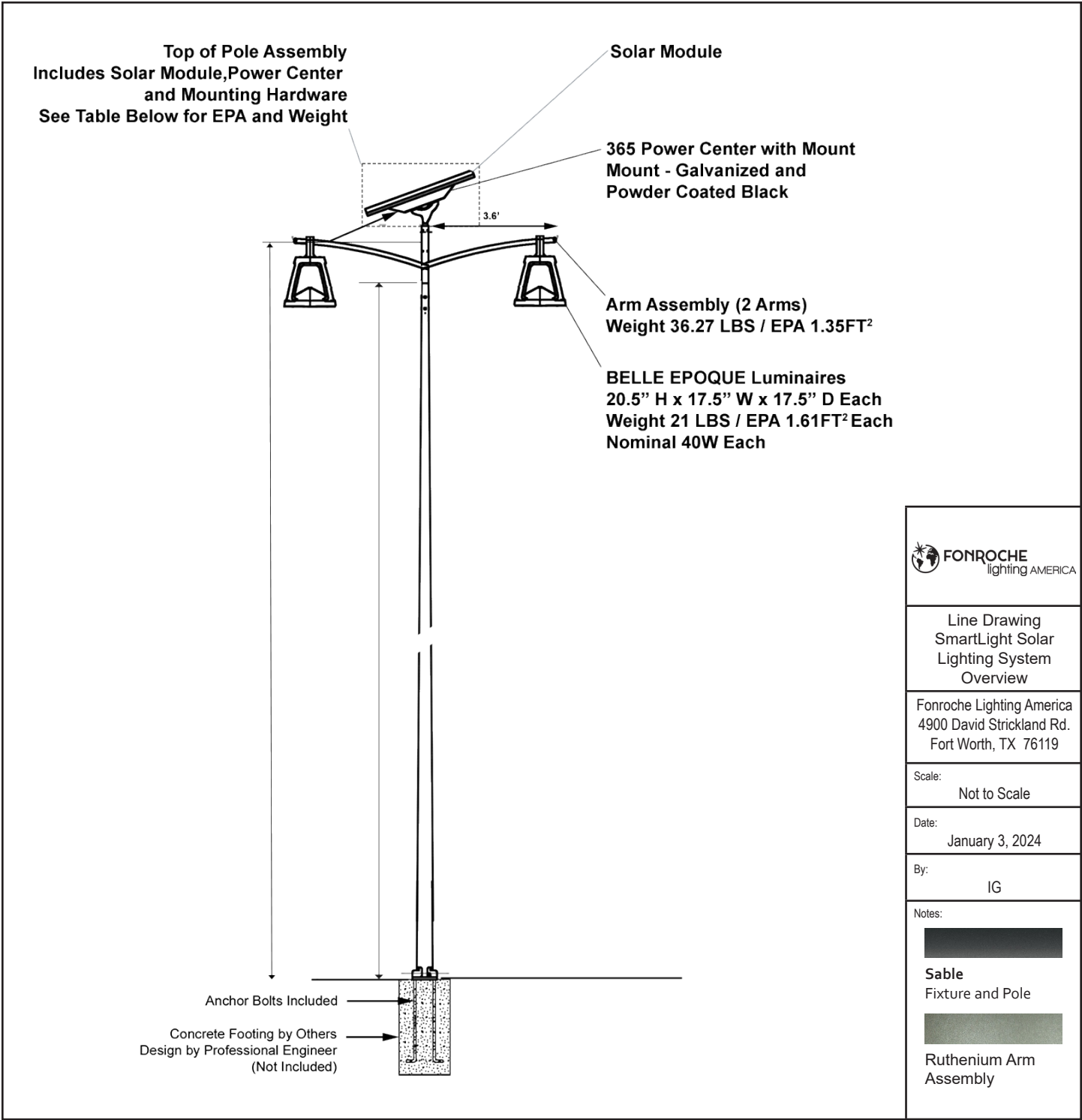
System Warranty and Certification	
System Warranty	5 Years
Solar Performance Warranty	25 Years
System Certification	CE

TOTAL TOP OF POLE ASSEMBLY - PANEL, MOUNTING, 365 POWER CENTER							
	EPA (Sq.Ft.)						
Solar Assembly	2P	3P	4P	10° Tilt	25° Tilt	45° Tilt	
P160F-HW-MC	113.31	123.89	134.48	2.36	4.99	7.67	
P270F-HW-MC	130.95	141.53	152.12	4.62	9.99	16.02	
P310F-HW-MC	130.95	141.53	152.12	4.62	9.99	16.02	

POLE SELECTED BASED ON PROJECT CONDITIONS		ARM		
PRODUCT CODE / DESCRIPTION	NOMINAL HEIGHT AG/MOUNTING HEIGHT	ARM LENGTH/FINISH	ARM WEIGHT	ARM EPA
14Ft. Round Tapered Pole-Anchor Base-2	14'/15'	3.6'/ Ruthenium Powder Coat	36.27 LBS	1.35
20Ft. Round Tapered Pole-Anchor Base-2	20'/21'	3.6'/ Ruthenium Powder Coat	36.27 LBS	1.35
25Ft. Round Tapered Pole-Anchor Base-2	25'/26'	3.6'/ Ruthenium Powder Coat	36.27 LBS	1.35
30Ft. Round Tapered Pole-Anchor Base-2	30'/31'	3.6'/ Ruthenium Powder Coat	36.27 LBS	1.35
14Ft. Round Tapered Pole-Direct Burial-2	14'/16'/Embed Depth 3' 9-1/4"	3.6'/ Ruthenium Powder Coat	36.27 LBS	1.35
20Ft. Round Tapered Pole-Direct Burial-2	20'/21'/Embed Depth 4' 5-1.4"	3.6'/ Ruthenium Powder Coat	36.27 LBS	1.35
25Ft. Round Tapered Pole-Direct Burial-2	25'/26'/Embed Depth 5' 0"	3.6'/ Ruthenium Powder Coat	36.27 LBS	1.35
30Ft. Round Tapered Pole-Direct Burial-2	30'/31'/Embed Depth Contact Rep.	3.6'/Ruthenium Powder Coat	36.27 LBS	1.35
CST - Pole				

2[BELLE	-	-	-]-[-	-	-	-	-	-	-	-	-	-	-	-	-	-	-
Fixture	Temp	Type	Solar	Power Center	Option	Pole	Color (Pole)	Color (Fixture)	Tilt Panel										

Fonroche Lighting America • 4900 David Strickland Rd. • Fort Worth, TX 76119
 www.FonrocheSolarLighting.com • 339-225-4530 Ext. 1 • Sales@Fonroche.US



FONROCHE
lighting AMERICA

Line Drawing
SmartLight Solar
Lighting System
Overview

Fonroche Lighting America
4900 David Strickland Rd.
Fort Worth, TX 76119

Scale:
Not to Scale

Date:
January 3, 2024

By:
IG

Notes:
Sable
Fixture and Pole
Ruthenium Arm
Assembly

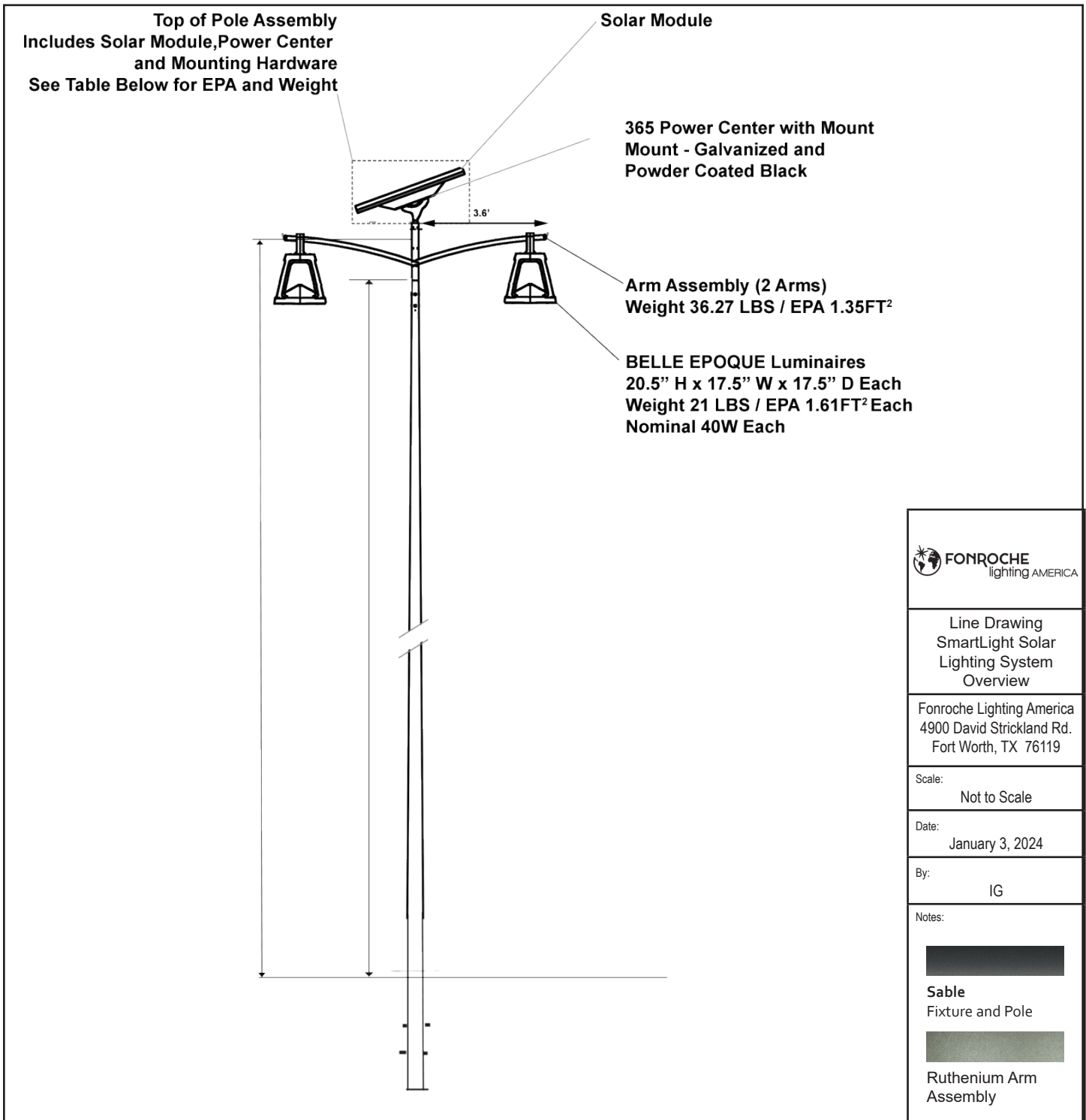
TOTAL TOP OF POLE ASSEMBLY - PANEL, MOUNTING, 365 POWER CENTER

Solar Assembly	EPA (Sq.Ft.)					
	2P	3P	4P	10° Tilt	25° Tilt	45° Tilt
P160F-HW-MC	113.31	123.89	134.48	2.36	4.99	7.67
P270F-HW-MC	130.95	141.53	152.12	4.62	9.99	16.02
P310F-HW-MC	130.95	141.53	152.12	4.62	9.99	16.02



2[BELLE - -]-[- -]- - - - -

Fixture	Temp	Type	Solar	Power Center	Option	Pole	Color (Pole)	Color (Fixture)	Tilt Panel
---------	------	------	-------	--------------	--------	------	--------------	-----------------	------------



TOTAL TOP OF POLE ASSEMBLY - PANEL, MOUNTING, 365 POWER CENTER						
Solar Assembly	EPA (Sq.Ft.)					
	2P	3P	4P	10° Tilt	25° Tilt	45° Tilt
P160F-HW-MC	113.31	123.89	134.48	2.36	4.99	7.67
P270F-HW-MC	130.95	141.53	152.12	4.62	9.99	16.02
P310F-HW-MC	130.95	141.53	152.12	4.62	9.99	16.02



2	[BELLE	-	-]-	[-	-	-	-	-	-	-	-	-
Fixture	Temp	Type	Solar	Power Center	Option	Pole	Color (Pole)	Color (Fixture)	Tilt Panel						