



# ESSENTIAL SINGLE SMARTLIGHT

LUMINAIRE PRODUCT CODE	NAME	COLOR TEMP	DISTRIBUTION	COLOR	HOUSE SIDE SHIELD	WEIGHT LBS EA.	EPA FT² EA.
[T54-CK 16B	Essential	2700K, 3000K, 4000K, AMBER	T2,T3,T4,CW (Crosswalk)	Black	Optional	7	.25

SOLAR ASSEMBLY/ PRODUCT CODE	DESCRIPTION	DIMENSIONS SOLAR MODULE (INCHES)	MODULE BACK SHEET/FRAME FINISH
P190F	190W PolyCrystalline Solar Module with Steel Mount - No Slip Tilt Adjustment (10,45 Degree) Mount Galvanized and Powder Coated. IEC 61730-1:2019 and IEC 61215-2:2017	44.29 x 37.6 x 1.37	Black/Black Adonized Aluminum
P310F	310W PolyCrystalline Solar Module with Steel Mount - No Slip Tilt Adjustment (10,45 Degree) Mount Galvanized and Powder Coated. IEC 61730-1:2019 and IEC 61215-2:2018	64.76 x 37.6 x 1.37	Black/Black Adonized Aluminum
P410F	410W PolyCrystalline Solar Module with Steel Mount - No Slip Tilt Adjustment (10,45 Degree) Mount Galvanized and Powder Coated. IEC 61730-1:2019 and IEC 61215-2:2019	67.8 x 44.65 x 1.37	Black/Black Adonized Aluminum

**Heavy Duty Mount Adder (Required with 45 degree tilt)**

HW-MC	Heavy Duty Mount Galvanized with Marine Powder Coat Upgrade
-------	---

POWER 365 ASSEMBLY PRODUCT CODE / DESCRIPTION		CHEMISTRY	OPERATING TEMPERATURE	CHARGING TEMPERATURE
2P	Power 365 Power Center with 624 Wh Battery Capacity-IP65	Nickel Metal Hydride (NiMH)	-40°F to + 158°F (-40°C to +70°C)	-40°F to + 158°F (-40°C to +70°C)
3P	Power 365 Power Center with 936 Wh Battery Capacity-IP65	Nickel Metal Hydride (NiMH)	-40°F to + 158°F (-40°C to +70°C)	-40°F to + 158°F (-40°C to +70°C)
4P	Power 365 Power Center with 1248 Wh Battery Capacity-IP65	Nickel Metal Hydride (NiMH)	-40°F to + 158°F (-40°C to +70°C)	-40°F to + 158°F (-40°C to +70°C)
6P	Power 365 Power Center with 1935 Wh Battery Capacity-IP65	Lithium Iron Phosphate (LFP)	14°F to + 140°F (-10°C to +60°C)	32°F to +113°F (-0°C to +45°C)

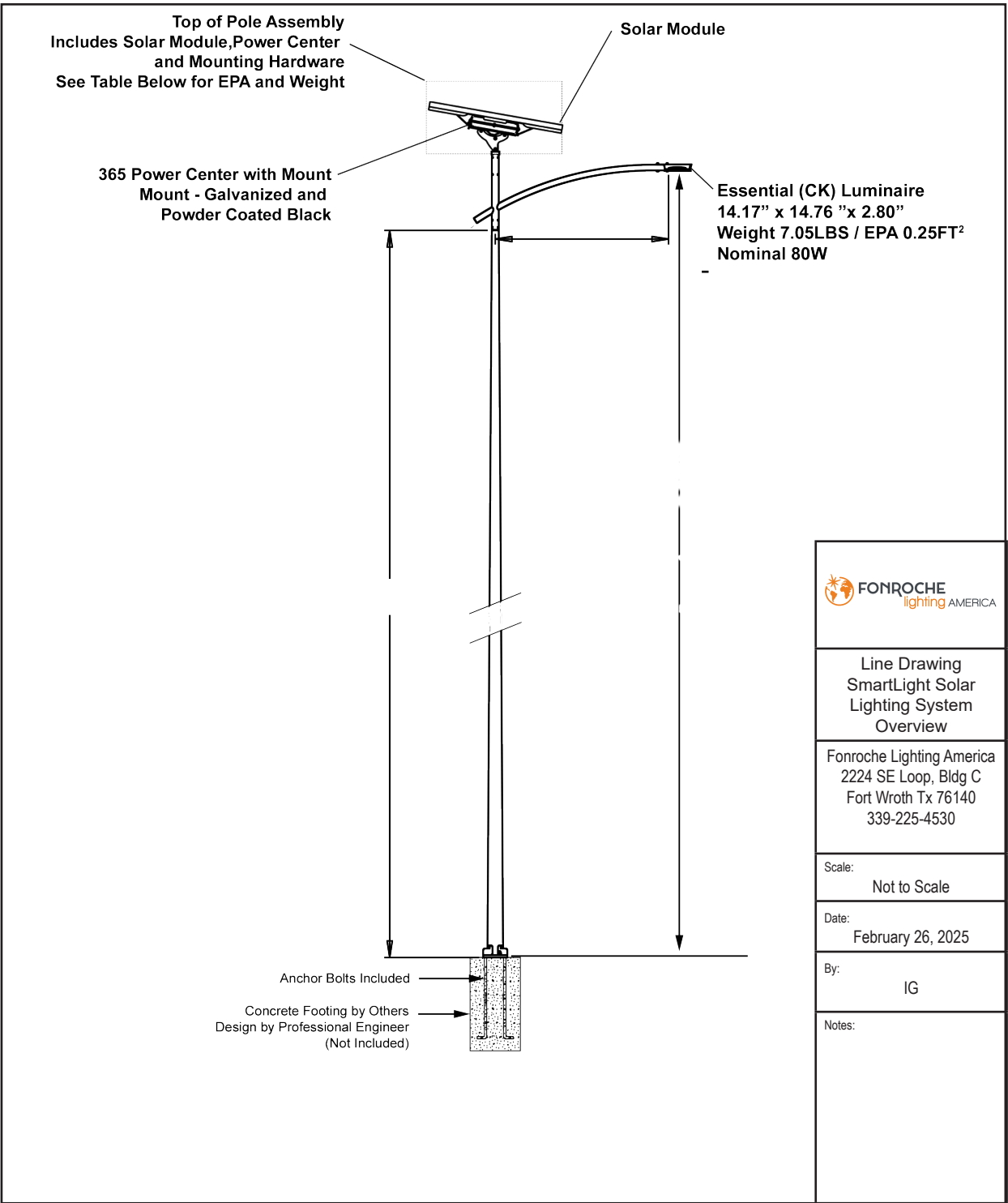
## Controller

Battery Management System (BMS) | Anti-Black Out Control | 3-Level Programmable Lighting Profiles

FULL SYSTEM WARRANTY			SOLAR PANEL PERFORMANCE WARRANTY			SYSTEM CERTIFICATION		
8 Years Parts and Labor / No Pro-Rating			25 Years			CE		

POLE SELECTED BASED ON PROJECT CONDITIONS			ARM ASSEMBLY	
PRODUCT CODE / DESCRIPTION	NOMINAL HEIGHT/ MOUNTING HEIGHT	EMBED DEPTH	4' ARM ASSY. WEIGHT/EPA	6' ARM ASSY. WEIGHT/EPA
14Ft. Round Tapered Pole-Anchor Base	14'/16'	NA	31.96 LBS. / 1.36 FT²	38.92 LBS. / 1.88 FT²
20Ft. Round Tapered Pole-Anchor Base	20'/22'	NA	31.96 LBS. / 1.36 FT²	38.92 LBS. / 1.88 FT²
25Ft. Round Tapered Pole-Anchor Base	25'/27'	NA	31.96 LBS. / 1.36 FT²	38.92 LBS. / 1.88 FT²
30Ft. Round Tapered Pole-Anchor Base	30'/32'	NA	31.96 LBS. / 1.36 FT²	38.92 LBS. / 1.88 FT²
14Ft. Round Tapered Pole-Direct Burial	14'/16'	3' 9-1/4"	31.96 LBS. / 1.36 FT²	38.92 LBS. / 1.88 FT²
20Ft. Round Tapered Pole-Direct Burial	20'/22'	4' 5-1/4"	31.96 LBS. / 1.36 FT²	38.92 LBS. / 1.88 FT²
25Ft. Round Tapered Pole-Direct Burial	25'/27'	5' 0"	31.96 LBS. / 1.36 FT²	38.92 LBS. / 1.88 FT²
30Ft. Round Tapered Pole-Direct Burial	30'/32'	Contact Representative	31.96 LBS. / 1.36 FT²	38.92 LBS. / 1.88 FT²
CST - Pole				

[ T54-CK 16B - - - ]-[ - - ]-				-		
Fixture	Temp	Type	House Shield	Solar	Power Center	Option
Pole				Color (Pole)	Color (Fixture)	Tilt Panel



SOLAR ASSEMBLY	BATTERY ASSEMBLY				EPA (Sq.Ft.)	
	2P	3P	4P	6P	10° Tilt	45° Tilt
P190F-HW-MC	113.76	124.34	134.93	130.52	2.82	9.32
P310F-HW-MC	131.40	141.98	152.57	148.16	3.98	14.19
P410F-HW-MC	136.25	146.83	157.42	153.00	4.88	17.13

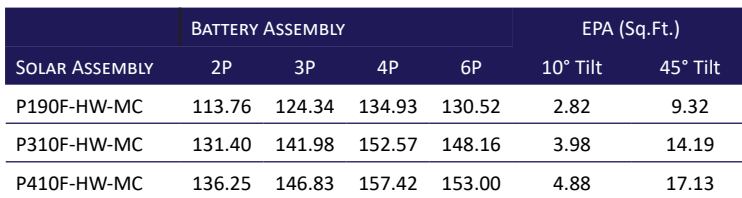


[ T54-CK 16B - - - ]-[ - - - ]- - -

Fixture Temp Type House Shield Solar Power Center Option

- - -

Pole Color (Pole) Color (Fixture) Tilt Panel



[ T54-CK 16B -          -          -          ]-[          -          ]-[          -          ]-[          -          ]

Fixture                      Temp                      Type                      House Shield                      Solar                      Power Center                      Option

\_\_\_\_\_ - \_\_\_\_\_ - \_\_\_\_\_ - \_\_\_\_\_

Pole                      Color (Pole)                      Color (Fixture)                      Tilt Panel