

NEW ART SINGLE SMARTLIGHT

LUMINAIRE PRODUCT CODE	NAME	COLOR TEMP	DISTRIBUTION	COLOR	WEIGHT LBS EA.	EPA FT² EA.
[New Art	New Art	2700K, 3000K, 4000K, AMBER	T2`	Black	10.8	0.52

SOLAR ASSEMBLY/ PRODUCT CODE	DESCRIPTION	DIMENSIONS SOLAR MODULE (INCHES)	MODULE BACK SHEET/FRAME FINISH
P190F	190W PolyCrystalline Solar Module with Steel Mount - No Slip Tilt Adjustment (10,45 Degree) Mount Galvanized and Powder Coated. IEC 61730-1:2019 and IEC 61215-2:2017	44.29 x 37.6 x 1.37	Black/Black Adonized Aluminum
P310F	310W PolyCrystalline Solar Module with Steel Mount - No Slip Tilt Adjustment (10,45 Degree) Mount Galvanized and Powder Coated. IEC 61730-1:2019 and IEC 61215-2:2018	64.76 x 37.6 x 1.37	Black/Black Adonized Aluminum
P410F	410W PolyCrystalline Solar Module with Steel Mount - No Slip Tilt Adjustment (10,45 Degree) Mount Galvanized and Powder Coated. IEC 61730-1:2019 and IEC 61215-2:2019	67.8 x 44.65 x 1.37	Black/Black Adonized Aluminum

Heavy Duty Mount Adder (Required with 45 degree tilt)	
HW-MC	Heavy Duty Mount Galvanized with Marine Powder Coat Upgrade

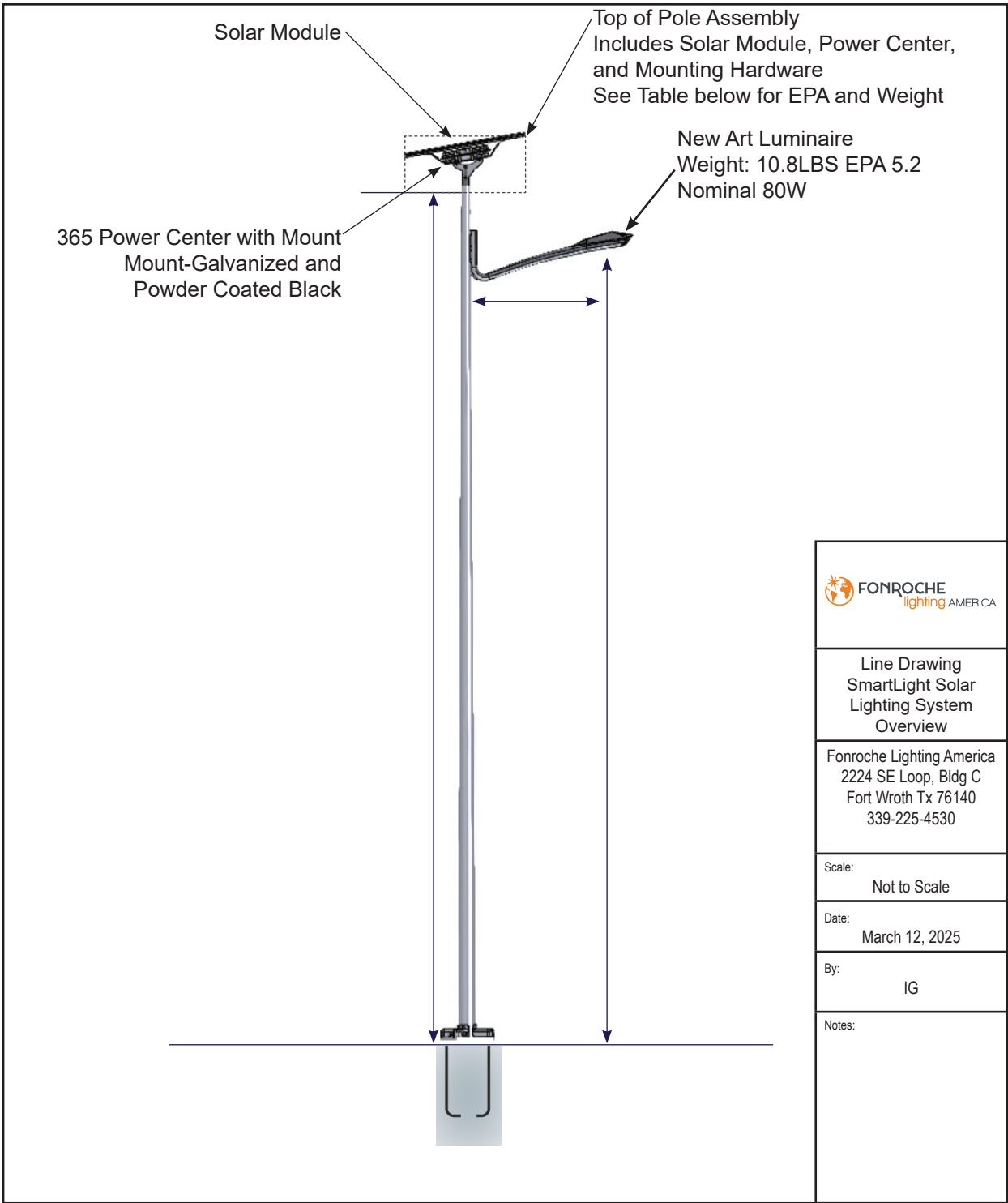
POWER 365 ASSEMBLY PRODUCT CODE / DESCRIPTION		CHEMISTRY	OPERATING TEMPERATURE	CHARGING TEMPERATURE
2P	Power 365 Power Center with 624 Wh Battery Capacity-IP65	Nickel Metal Hydride (NiMH)	-40°F to + 158°F (-40°C to +70°C)	-40°F to + 158°F (-40°C to +70°C)
3P	Power 365 Power Center with 936 Wh Battery Capacity-IP65	Nickel Metal Hydride (NiMH)	-40°F to + 158°F (-40°C to +70°C)	-40°F to + 158°F (-40°C to +70°C)
4P	Power 365 Power Center with 1248 Wh Battery Capacity-IP65	Nickel Metal Hydride (NiMH)	-40°F to + 158°F (-40°C to +70°C)	-40°F to + 158°F (-40°C to +70°C)
6P	Power 365 Power Center with 1935 Wh Battery Capacity-IP65	Lithium Iron Phosphate (LFP)	14°F to + 140°F (-10°C to +60°C)	32°F to +113°F (-0°C to +45°C)

Controller
Battery Management System (BMS) | Anti-Black Out Control | 3-Level Programmable Lighting Profiles

FULL SYSTEM WARRANTY	SOLAR PANEL PERFORMANCE WARRANTY	SYSTEM CERTIFICATION
8 Years Parts and Labor / No Pro-Rating	25 Years	CE

POLE SELECTED BASED ON PROJECT CON- DITIONS			ARM ASSEMBLY
PRODUCT CODE / DESCRIPTION	NOMINAL HEIGHT/MOUNTING HEIGHT	EMBED DEPTH	4.2' ARM ASSY. WEIGHT/EPA
14Ft. Round Tapered Pole-Anchor Base	14'/12.5'	NA	34.04 LBS. / 1.36 FT²
20Ft. Round Tapered Pole-Anchor Base	20'/18.5'	NA	34.04 LBS. / 1.36 FT²
25Ft. Round Tapered Pole-Anchor Base	25'/23.5'	NA	34.04 LBS. / 1.36 FT²
30Ft. Round Tapered Pole-Anchor Base	30'/28.5'	NA	34.04 LBS. / 1.36 FT²
14Ft. Round Tapered Pole-Direct Burial	14'/12.5'	3' 9-1/4"	34.04 LBS. / 1.36 FT²
20Ft. Round Tapered Pole-Direct Burial	20'/18.5'	4' 5-1/4"	34.04 LBS. / 1.36 FT²
25Ft. Round Tapered Pole-Direct Burial	25'/23.5'	5' 0"	34.04 LBS. / 1.36 FT²
30Ft. Round Tapered Pole-Direct Burial	30'/28.5'	Contact Representative	34.04 LBS. / 1.36 FT²
CST - Pole			

[illegible]



SOLAR ASSEMBLY	BATTERY ASSEMBLY				EPA (Sq.Ft.)	
	2P	3P	4P	6P	10° Tilt	45° Tilt
P190F-HW-MC	113.76	124.34	134.93	130.52	2.82	9.32
P310F-HW-MC	131.40	141.98	152.57	148.16	3.98	14.19
P410F-HW-MC	136.25	146.83	157.42	153.00	4.88	17.13

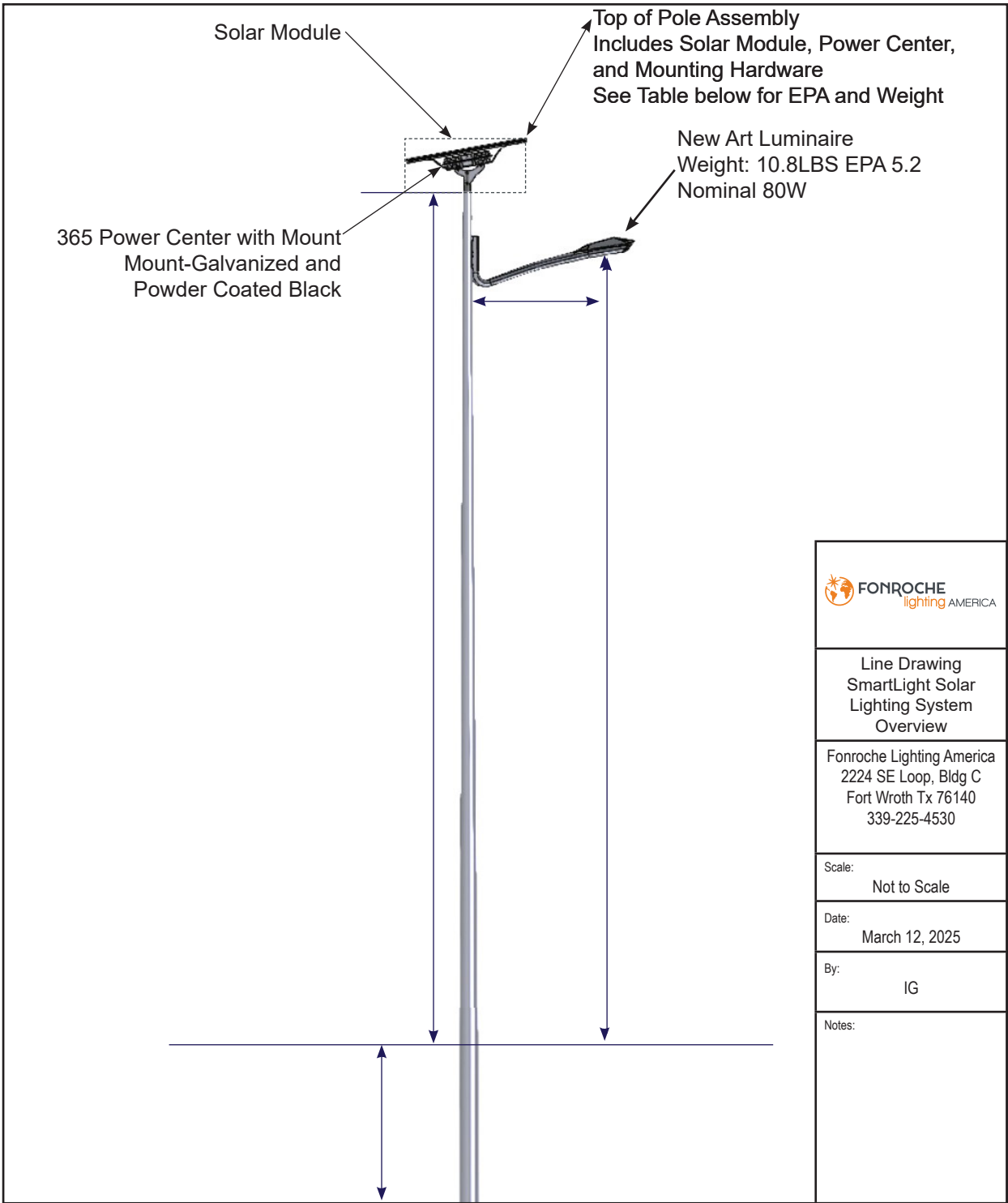


[New Art - -]-[- -]-

Fixture Temp Type Solar Power Center Option

- -

Pole Color (Pole) Color (Fixture) Tilt Panel



Line Drawing
SmartLight Solar
Lighting System
Overview

Fonroche Lighting America
2224 SE Loop, Bldg C
Fort Worth Tx 76140
339-225-4530

Scale:
Not to Scale

Date:
March 12, 2025

By:
IG

Notes:

SOLAR ASSEMBLY	BATTERY ASSEMBLY				EPA (Sq.Ft.)	
	2P	3P	4P	6P	10° Tilt	45° Tilt
P190F-HW-MC	113.76	124.34	134.93	130.52	2.82	9.32
P310F-HW-MC	131.40	141.98	152.57	148.16	3.98	14.19
P410F-HW-MC	136.25	146.83	157.42	153.00	4.88	17.13



[New Art - - -]-[- - -]-
Fixture Temp Type Solar Power Center Option

Pole

Color (Pole)

Color (Fixture)

Tilt Panel