



**365**  
**NIGHTS OF**  
**GUARANTEED**  
**LIGHTING**

S O L A R   S T R E E T   L I G H T I N G

# SOLAR IS THE NEW STANDARD



## THE LEADING PROVIDER OF AUTONOMOUS SOLAR LIGHTING

At Fonroche Lighting, we are motivated by our desire to revolutionize street lighting around the world. With over 20 years of experience, and as the world leader in solar street lighting, we are convinced that solar energy is the best alternative to conventional grid street lighting. Together, we will overcome challenges, break the mold, and accelerate the transition toward a world of sustainable, efficient, economical, and responsible lighting.

# WHY CHOOSE SOLAR LIGHTING?

## FOR 365 NIGHTS OF...



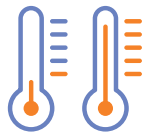
### Savings

Quick and easy installation, no more electricity bills, and no maintenance for 10+ years



### Autonomy

100% powered by solar energy, our solutions do NOT require connection to the grid



### Reliability

Resistant to even the most extreme weather conditions, including high winds and temperatures ranging from -40 °F to +158 °F



### Safety

Anti-blackout security system and vandalism protection



### Intelligence

Optimized energy storage and remote lighting control

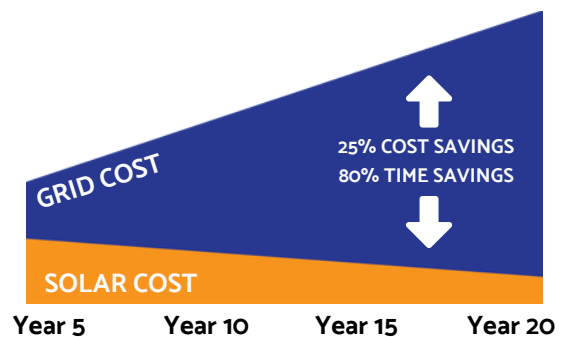


### Environmental Responsibility

With a carbon footprint 2 to 6 times lower than grid lighting

## Solar Lighting Reduces Costs From Day One!

Solar lighting eliminates the need for trenching, electrical grid repairs, or construction costs thanks to its **cable-free, hook up-free, and switchgear-free operation**. This represents significant, immediate savings. Say goodbye to electricity bills for your outdoor lighting!



## Solar Cost Savings Over Time



# POWER 365 SOLAR TECHNOLOGY



DESIGNED  
IN FRANCE



ASSEMBLED  
IN USA

## Photovoltaic Module

- Excellent efficiency in all climates
- Self-cleaning hydrophobic coating
- Lifespan of 30 Years



## Smart Storage And Management System

- Long Lifespan (12 years or 4000 cycles)
- Easy to recycle
- Durability in extreme temperatures (From -40F to +158F)
- Programmable lighting profiles



## LED Light

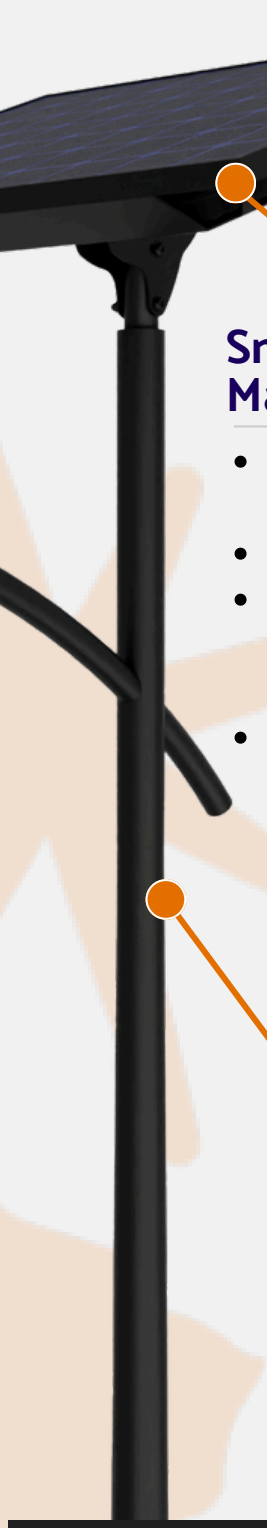
- Lighting performance exceeding 190 Lm/W
- From 40 to 80 nominal Watts
- Lifespan of 20 years

## Advanced Solar Lighting Technology

The Smartlight combines high-efficiency solar panels, advanced energy storage, and LED technology to deliver powerful, reliable solar street lighting. Powered by Fonroche's Power 365 technology, it ensures unmatched performance through high-quality components and a project-specific engineering approach.

## Pole And Mounting Arm

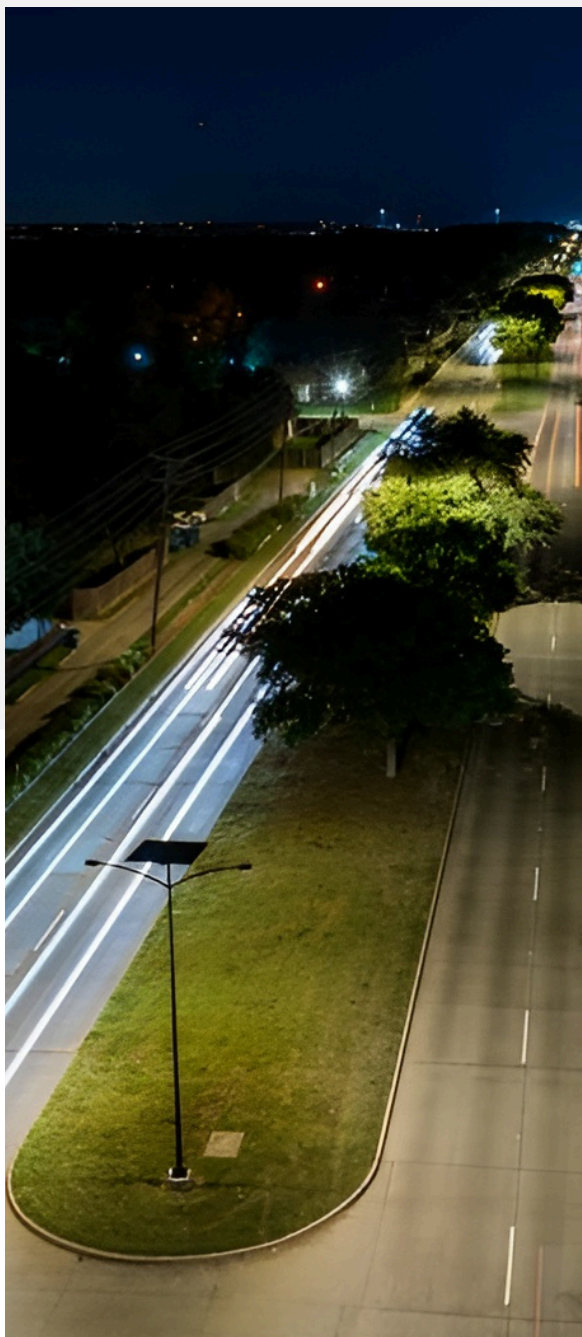
- Sized to official AASHTO standards or as specified



# BATTERY MANAGEMENT SYSTEM

## At The Heart Of The System

Power 365, our smart energy storage and management system, has been specifically designed by our R&D teams for Smartlight solar streetlights



## Energy Storage

Robust and durable, the energy management system technology offers the best resistance in terms of charging temperature and life span, with an expected lifespan of 10 to 12 years depending on climate.

- NIMH Battery: resistance to extreme temperatures
- Long life span
- Easy to recycle
- 100% usable charge without damaging the battery
- No 'hazardous materials' transport restrictions



## Smart Energy Management

Equipped with a custom-developed BMS, POWER 365 includes:

- Programmable operating ranges
- Storage optimization
- Twilight detection system
- Software to analyze solar irradiation at every point on the globe
- Thermal regulation system
- An anti-blackout safety device
- Geolocation system

# LEADING MANUFACTURER

## In The Solar Street Lighting Industry

Fonroche Lighting America is the leading provider of autonomous, off-grid solar lighting, delivering resilient infrastructure for safer, smarter communities without utility dependence.

We are backed by a global leader with **over 250,000 installations** and **390+ employees worldwide**, with a presence across Europe, Africa, Latin America, and North America.

**250,000+**

Streetlights  
Deployed

**500+**

U.S.  
Cities/Towns

**50+**

Countries

**20+**

Years of  
Experience



## Quality Assurance

### For Our Customers

A **zero-defect quality policy** is applied across all our products, with strict supplier selection based on rigorous specifications and standards.

## The Design Office

### A Team Of Experts

### Dedicated To Your Project

Each project is supported by comprehensive environmental, mechanical, and photometric studies to **ensure optimal performance and reliability**, along with tailored technical support and cost-efficient design.

## Installation Services

### Simple Installation.

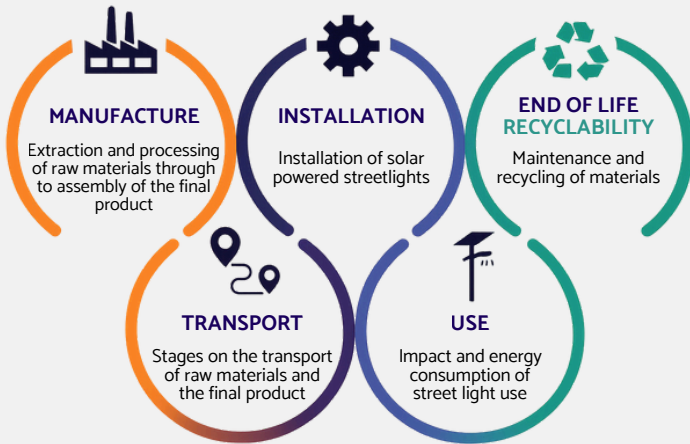
### Flexible Applications.

We provide **installation guidance and on-site support** for fast, seamless deployment. Quickly upgrade or replace existing lighting with no trenching or electrical work required.



# LIFE CYCLE ANALYSIS & RECYCLING

## Assessing The Environmental Impact Of Our Products



### What is a LIFE CYCLE ANALYSIS?

As part of its eco-design approach, Fonroche Lighting conducted a full life cycle analysis of its Smartlight solar streetlights to **evaluate environmental impact across their entire lifespan**, from **manufacturing to use and recycling**.

This analysis measures carbon emissions per night over a **40-year period**, reflecting the **maximum lifespan** of system components.

## High-Performance And Easy To Recycle

### Power 365

Fonroche's Power 365 technology integrates battery storage and intelligent controls to manage solar streetlight performance. It uses **highly recyclable NiMH batteries**, with recovered materials, primarily **Nickel-Iron**, repurposed for steel production.

Recycling is handled by specialized partners, including **SNAM** for batteries and **EcoSystem** for electrical components.

**99%**  
**RECYCLABILITY RATE**  
**LIFESPAN**  
**UP TO 12 YEARS**



### The Photovoltaic Module

Fonroche Lighting has been a member of the eco-organization **SOREN** (formerly PV Cycle) since 2017 for the recycling of its end-of-life **photovoltaic panel components**.



ecosystem | soren | SNAM

**99%**  
**RECYCLABILITY RATE**  
**LIFESPAN**  
**UP TO 30 YEARS**

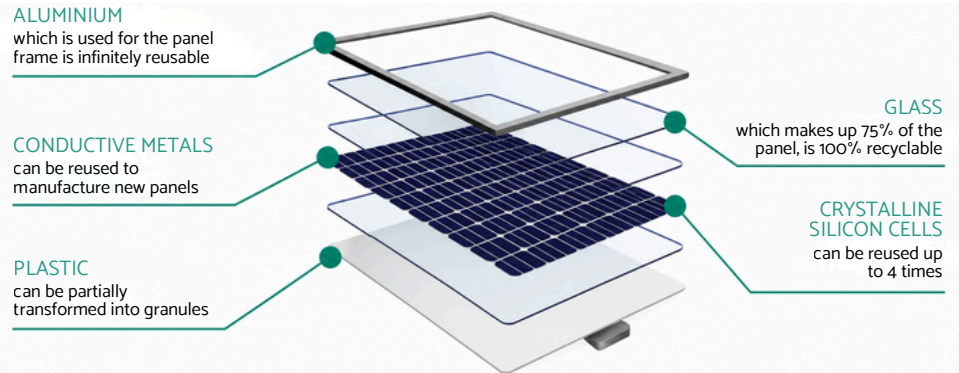
**ALUMINIUM**  
which is used for the panel frame is infinitely reusable

**CONDUCTIVE METALS**  
can be reused to manufacture new panels

**PLASTIC**  
can be partially transformed into granules

**GLASS**  
which makes up 75% of the panel, is 100% recyclable

**CRYSTALLINE SILICON CELLS**  
can be reused up to 4 times

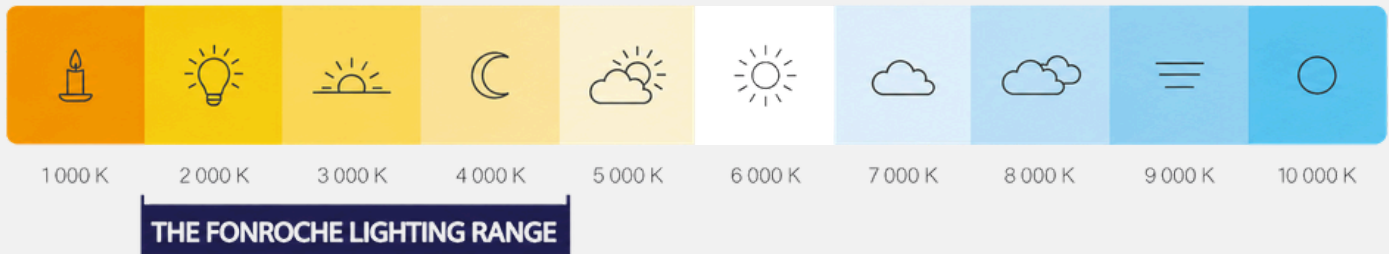


# GREENER & FAIRER LIGHTING

## Warmer Lighting That Works In Harmony With Nature

Fonroche Lighting offers a wide range of color temperatures and optical distributions to deliver high-performance, project-specific lighting solutions.

Measured in Kelvin (K), color temperature influences the appearance and environmental impact of light. Warmer color temperatures help **reduce light pollution, preserve dark skies, and minimize disruption to wildlife** and surrounding ecosystems. The Smartlight range offers **multiple color temperature options**, allowing each lighting solution to be tailored to the needs of its environment.



## Our Global Approach To Respecting Biodiversity

### An Adapted Range Of Lenses

(with different light dispersions) that allow us to adapt the lighting output of our streetlights to respect local biodiversity.

### Adjustable Light Levels

Our street lights can be programmed to provide optimal brightness (dimming or even switching off the streetlight if necessary).

### Control Light Output

To avoid loss of light (flux code CIE).

### “Warmer” Color Temperatures

Ranging from **2000k to 4000k** to avoid disturbing photosensitive species.

### An Environmentally Responsible Approach

Designed with the environment in mind, our solution minimizes site disruption, produces no CO<sub>2</sub> emissions during operation, protects biodiversity, delivers long-term performance, and is nearly 100% recyclable.

# PRESERVING THE NOCTURNAL ENVIRONMENT

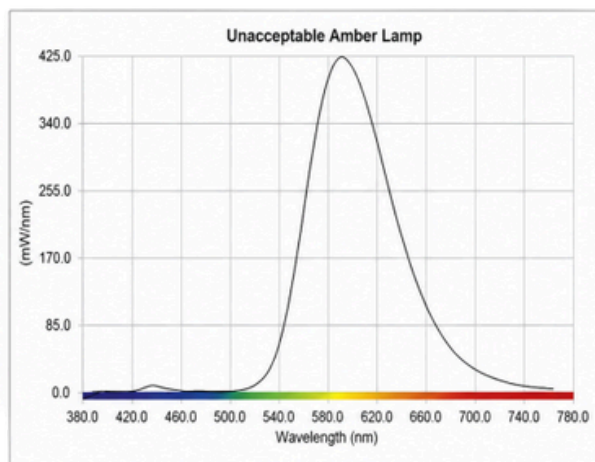
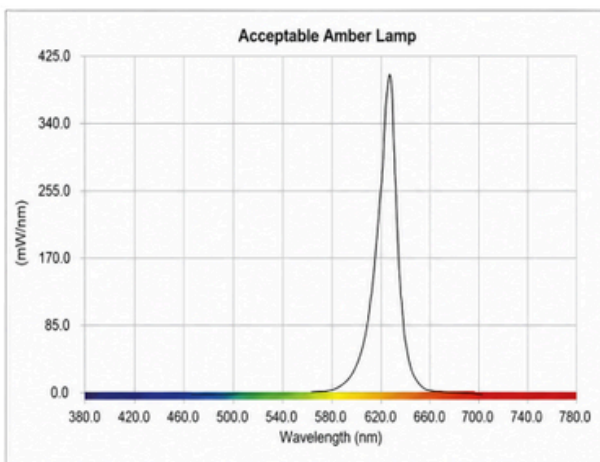
With natural habitats increasingly affected by artificial lighting, preserving and restoring ecosystems has become essential.

By integrating biodiversity conservation into land-use and infrastructure planning, communities and organizations around the world are making more environmentally responsible lighting decisions. As part of this effort, many regions now regulate outdoor lighting to help **preserve the night-time environment and reduce light pollution.**

Fonroche Lighting offers a **wide range of color temperatures and optical configurations**, delivering high-performance, tailor-made solutions for every project. Warmer color temperatures and amber LED options are designed to minimize blue light emissions, helping **reduce disruption to wildlife and sensitive ecosystems** – including sea turtles, migratory birds, and other nocturnal species – while maintaining safe, reliable illumination.

## Amber LEDs & Shielding

- 1600K - Dominant WL: LD 591.3nm & Purity of 99.5% (Peak WL: Ip 604.7nm)
- Shielding accessories





# OUR UNIQUE APPROACH

Every project is unique. By analyzing **local solar irradiance, weather patterns, and environmental conditions**, we design each system with the optimal size and components to ensure reliable lighting 365 nights a year, even in the most demanding conditions.

While every system is precisely engineered using detailed solar studies and environmental data, the result is a solution that is **simple to deploy and easy to manage**. From design to deployment, Fonroche Lighting America delivers optimized solar lighting systems that perform as expected, every night.

1

## Identification Of Project

Recognize each project's unique requirements

2

## Solar And Environmental Study

Collection of weather data from the site

Sizing and simulation of a typical year

3

## Custom Photometric Study

365 nights of guaranteed lighting per year

Adjustments made to create a project tailored to its location

4

## Precise Installation

Ensure optimized installation for cost efficiency

### Optimize

Extend the lifespan of installations with continuous remote management, available 24/7

### Monitor

Control and manage equipment remotely, without the need for on-site visits

### Eliminate

Reduce physical interventions and minimize the use of lifting platforms

### Anticipate

Meet needs with effective predictive maintenance

### Update

Automatically upgrade software to ensure performance and longevity

### Control

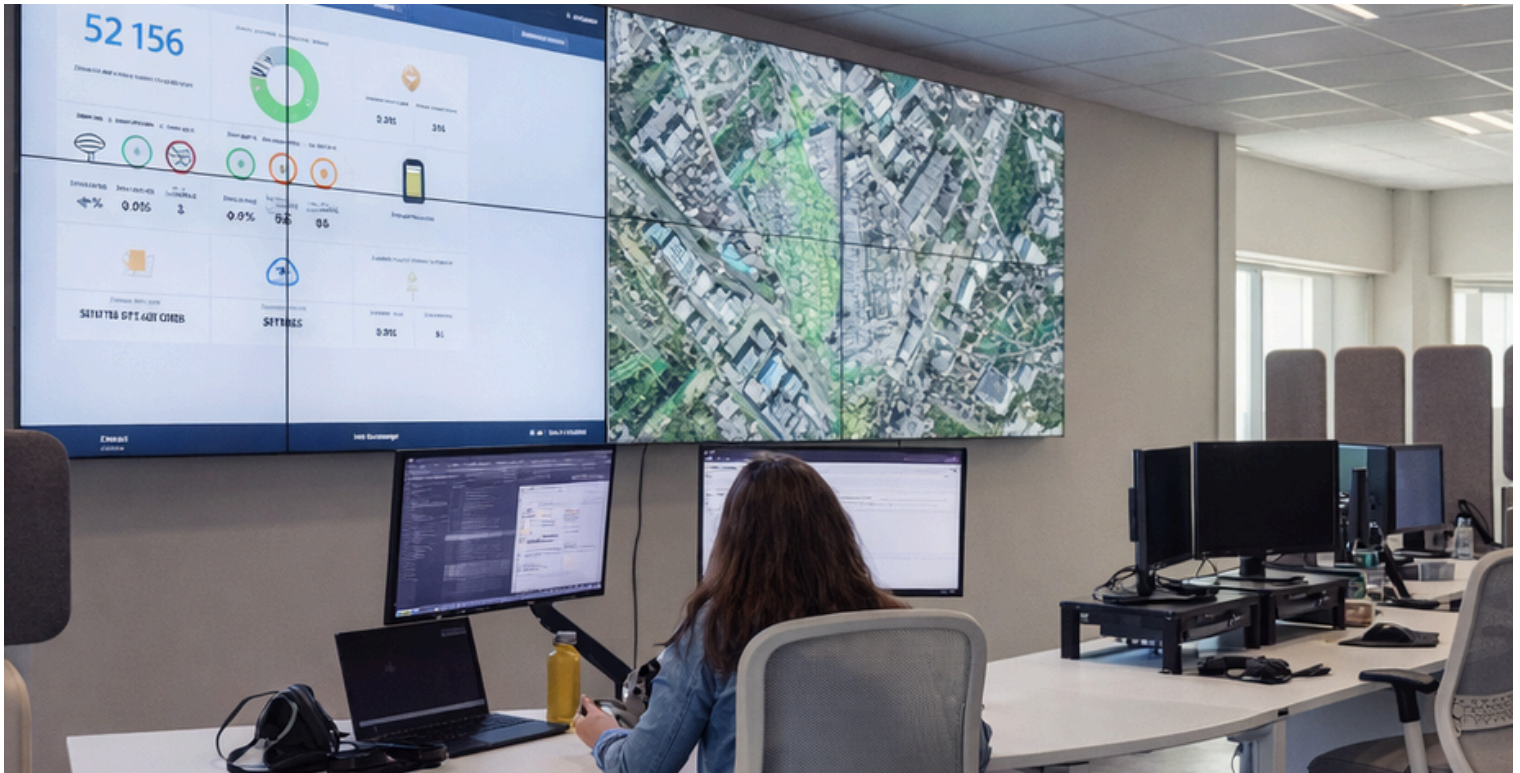
Simultaneously manage one or multiple solar streetlights in real time

Developed by our team, Fonroche Connect is an **intuitive remote communication tool** that allows you to monitor and control your solar lighting network remotely. Thanks to advanced technology, you can **geolocate your streetlights, access real-time diagnostics, and optimize their performance.**

With **Fonroche Connect** enjoy **365 nights of uninterrupted lighting per year**. More than just a monitoring tool, it's your **key to efficient, smart, and stress-free remote management** of your lighting network.



**High-performance features to meet all daily needs and scenarios**



# THE POWER ROOM

## The Largest Test Center For Solar Powered Lighting

Exposed to strong winds, extreme temperatures, humidity, and corrosion, **Fonroche Lighting systems are built to perform in the toughest conditions.**

To ensure long-term reliability and efficiency, we leverage **deep expertise in energy storage** and operate the world's only dedicated solar lighting battery testing center. Equipped with **12 climatic chambers**, it simulates environments across the globe and enables custom **testing tailored to each project's specific conditions.**

## We Simulate All Climates

**-40°F** to **+158°F**

### To Guarantee Reliability, Resistance, And Longevity Of Our Systems

The Power Room allows us to **put all our batteries and cells through rigorous tests** to guarantee 365 nights of lighting a year, anywhere in the world.

- Characterization of battery behavior in all climates
- Accelerated aging, lifespan
- Thermal shocks, temperature fluctuations
- Watertightness



# STREET LIGHTING

YOUR AREA, YOUR STYLE, **OUR AMBIENCES**



## BELLE EPOQUE

Refined  
Classic  
Stylish

## NEW ART

Dynamic  
Contemporary  
Striking



## OPERA

Ornate  
Elegant  
Modern

## ESSENTIAL

Sleek  
Timeless  
Minimal



With lines that **blend functionality and elegance**, the lights in our **SMARTLIGHT range** are designed as a complete package and come in a **variety of distinctive styles**. In addition to providing solar-powered lighting, Fonroche Lighting can also **help you choose the ambience** that best suits your environment, reflecting your desire to take an innovative approach to street lighting.



**nowatt** — architectural **solar** lighting



## CRYSTAL STUD

Elegant, and  
built to last



## FOLLOW L BOLLARD

Aesthetic and  
high-performance  
aluminum



## OKO BOLLARD

A refined wooden  
design inspired by  
nature



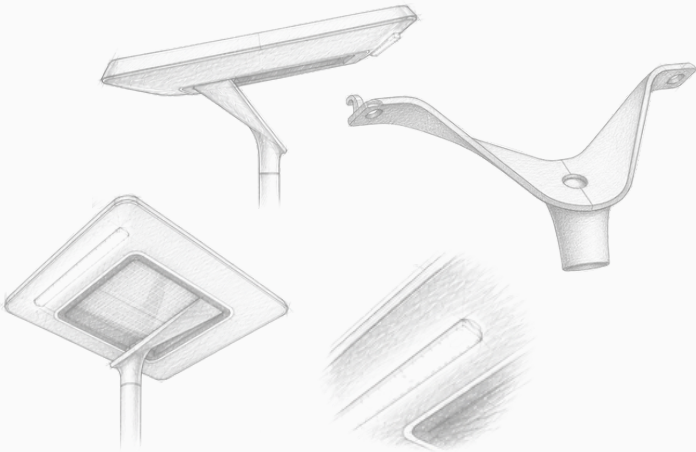
## BRUT BOLLARD

Durable and  
robust concrete  
construction

# HELIA SMARTLIGHT

Sculptural - Advanced - Innovative

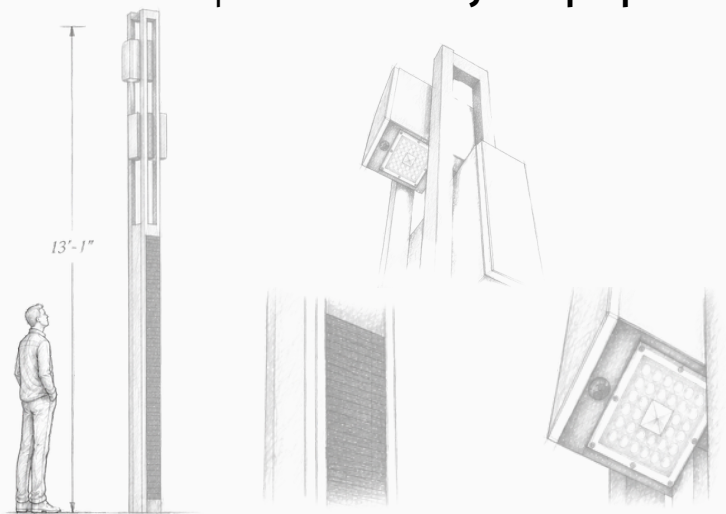
This isn't just a streetlight. **This is Helia.** Redefining what **solar lighting** can be, by uniting **performance, design, and innovation** into a new standard where power and elegance become one.



# FOLLOW UP COLUMN

Elevated - Architectural - Engineered

**FOLLOW UP** elevates urban lighting with a **refined silhouette** and precise illumination, shaping spaces with **clarity and purpose.**





# HELIA SMARTLIGHT

Available in 3 colors



Titanium  
Sheen



Concrete  
Mist



Black  
Shadow

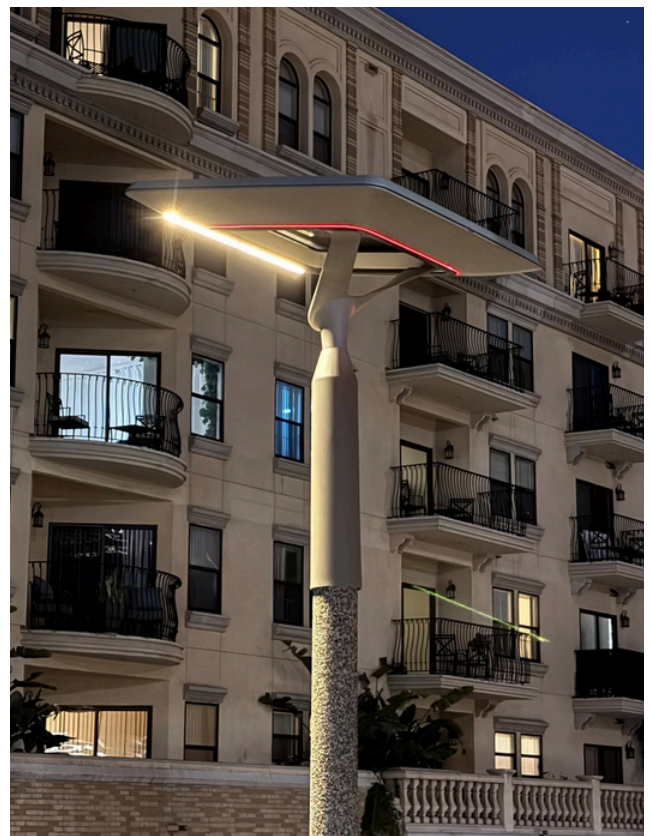


# Helia



## HELIA

True concentrations of technology, Helia combines **sculptural design, advanced technology, and unprecedented installation freedom**. Where **aesthetics and innovation** meet, the rules of lighting change.

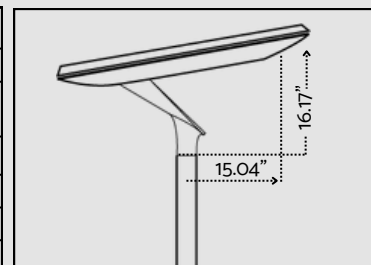


## Applications

Roads, urban centers,  
parking lots, residential areas

## Specifications

Materials	Aluminum foundry
LED Modules	IP66 and IK09
Nominal Power	60 W Nominal
Lighting Efficiency	> 200 lm/W
Color Temperature	2200K - 2700K - 3000K
Nominal Voltage	24 V
Customization	Colors (see color chart)



# OPERA SMARTLIGHT

## Enhance Your Lighting With Decorative Features

The **OPERA** Decorative Smartlight fixture brings a mix of **traditional elegance and modern efficiency**.

Designed for parks, pedestrian walkways, and commercial districts, this solar streetlight enhances **urban landscapes with its customizable finishes** and optimized LED output.

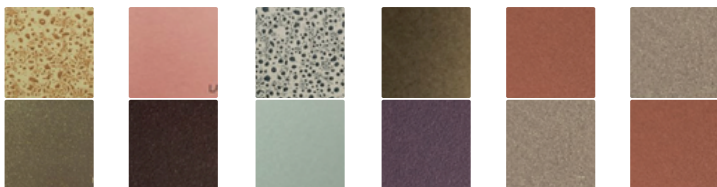
Its sophisticated pendant-style fixture creates a unique ambiance while maintaining **off-grid sustainability**.

### Applications

Roads, parking lots,  
pedestrian walkways,  
trails



Available in 6 color combinations



Golden Oak

Marble Rose

Marble Blue

Bronze Roman

Terre Brown

Terre Sand

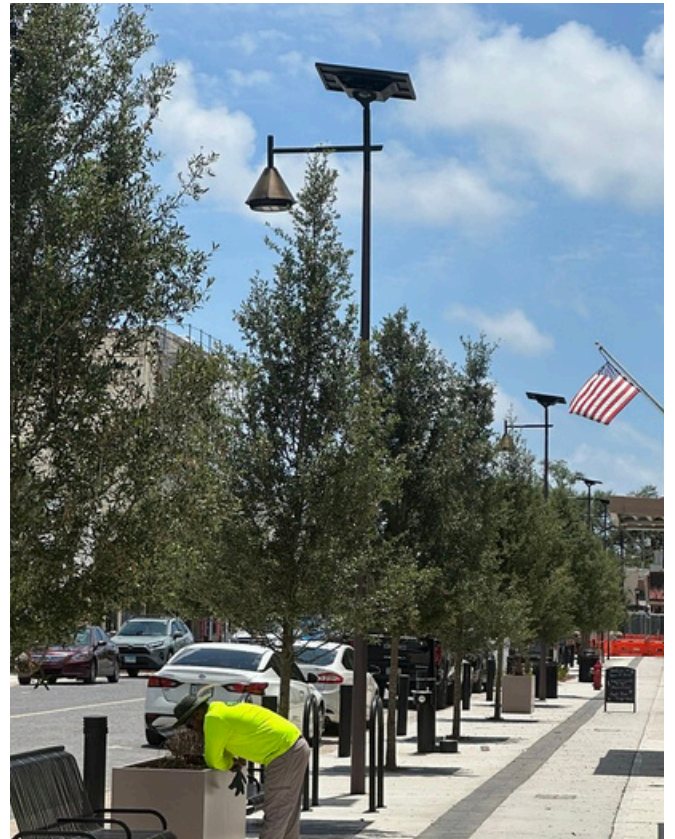


# Opera



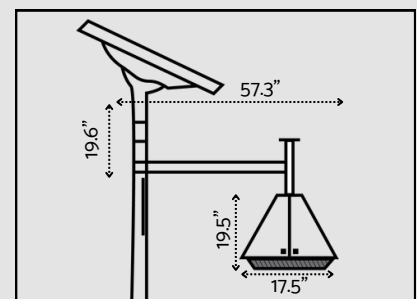
## OPERA

**Ornate and highly customizable**, OPERA effortlessly adapts to the unique character of each environment, while low-positioned LED modules provide **optimized, high-performance illumination**. Its refined design enhances visual appeal while maintaining the durability and reliability required for public infrastructure.



## Specifications

Materials	Aluminum casting with decorative sheet metal
LED Modules	Interchangeable Modules - IP67 and IK09
Mounting Arm	Suspension-effect slip fit mounting arm: Available in a single or twin version
Lighting Efficiency	> 190 lm/W
Color Temperature	2700K - 3000K - 4000K
Uplight	0%
Optics	Type II - Type III - Type IV - Type CW
Customization	Colors (see color chart)



# BELLE EPOQUE SMARTLIGHT

## Traditional With A Modern Twist

The **BELLE EPOQUE** is a solar-powered streetlight that blends historic charm with modern technology. Inspired by traditional streetlamps, its vintage-inspired fixture is suspended upside-down, offering **both aesthetic appeal and robust durability**.

Perfect for **historic town centers, heritage districts, and civic spaces**, the Belle Epoque maintains classic architecture while delivering modern lighting efficiency.

## Applications

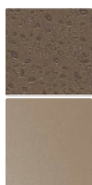
Historic town centers, heritage districts, civic spaces



Available in 4 color combinations



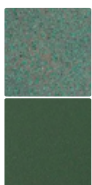
Paris



Concorde



Lafayette



Mirabeau



# Belle Epoque



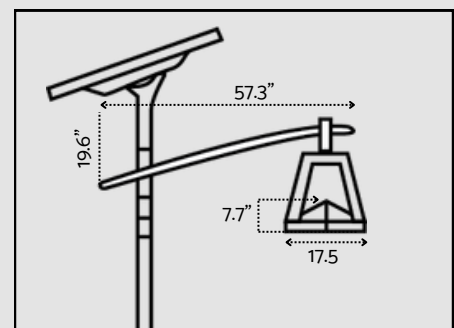
## BELLE EPOQUE

BELLE EPOQUE features a stylish design that integrates seamlessly into storied environments. Its curved mounting arm and suspended lantern create a sense of visual lightness, giving the fixture an **elegant, floating appearance** while enhancing the overall streetscape.



## Specifications

Materials	Aluminum casting
LED Modules	Interchangeable Modules - IP67 and IK09
Mounting Arm	Oblong slip fit mounting arm: Available in a single or twin version
Lighting Efficiency	> 190 lm/W
Color Temperature	2700K - 3000K - 4000K
Uplight	0%
Optics	Type II- Type III - Type IV - Type CW
Equipment	Bird guard included
Customization	Colors (see color chart)



# NEW ART SMARTLIGHT

## Stand Out With A Dynamic Style

The **NEW ART** Smartlight is defined by a fluid, lightweight silhouette that brings a polished technological presence to both urban and rural roadways.

**Inspired by nature and mineral forms**, its sculpted, faceted fixture echoes the strength and light-reflecting qualities of a diamond, expressing both robustness and precision.

The raw, carved appearance of the fixture highlights the durability of its materials while delivering a **distinctly contemporary aesthetic**.

## Applications

Roads, streets, walkways,  
roundabouts, highways



# New Art



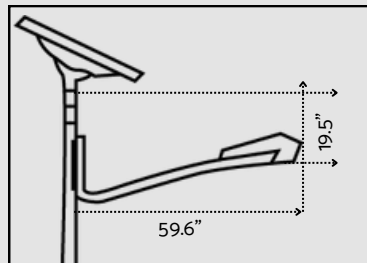
## NEW ART

NEW ART will stand out from the crowd as it brings a high tech feel to your roads. Its streamlined structure enhances the streetscape while maintaining the **performance and durability** required for public infrastructure, making it an ideal choice for projects looking to make a strong impact.



## Specifications

Materials	Aluminum casting
LED Modules	Interchangeable Modules - IP67 and IK09
Mounting Arm	Bolt-on mounting arm: Available in a single or twin version
Lighting Efficiency	> 190 lm/W
Color Temperature	3000K - 4000K
Uplight	0%
Optics	Type II



# ESSENTIAL SMARTLIGHT

## A Timeless Aesthetic

The **ESSENTIAL** Smartlight combines modern aesthetics with high efficiency, making it a versatile solution for **busy roadways, parking areas, residential streets, trails, and playgrounds**. Its clean, streamlined design integrates seamlessly into a wide range of environments while delivering reliable performance.

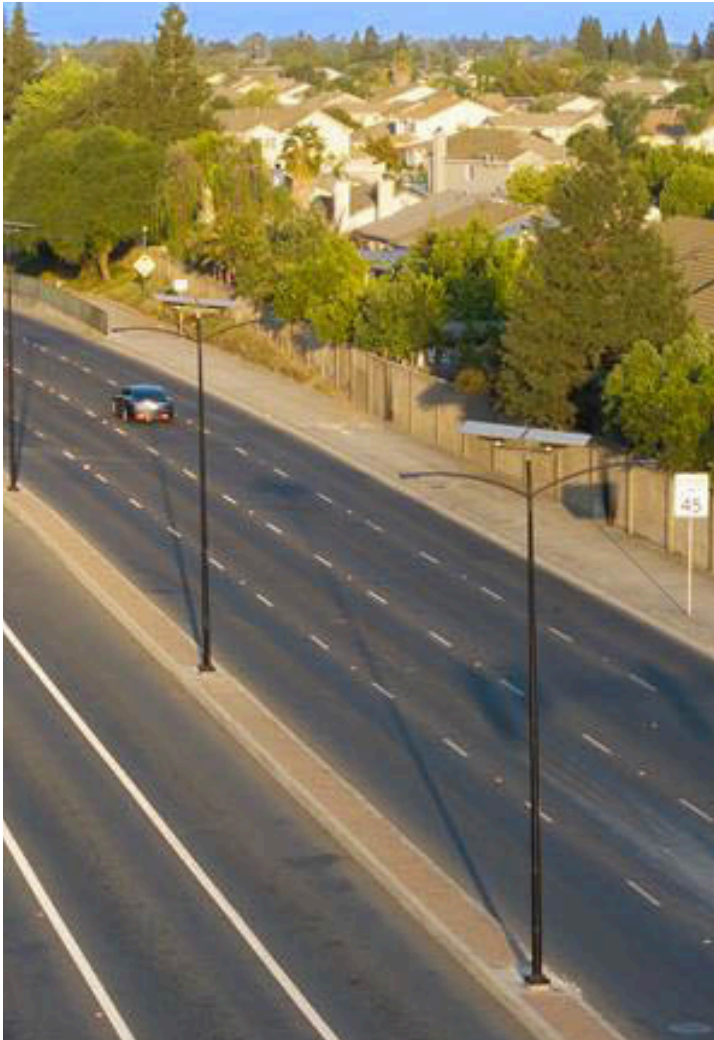
This solar-powered streetlight features optimized LED positioning to ensure consistent, **uniform illumination and enhanced visibility** across the application area, supporting safety and usability in any setting.

## Applications

Roadways, parking lots, residential streets, trails, playgrounds, sport courts



# Essential



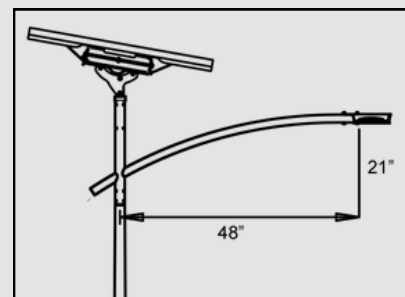
## ESSENTIAL

With its **timeless design**, the ESSENTIAL Smartlight adapts flawlessly to any project or environment. Its **sleek, slender form** delivers a highly functional solution that integrates effortlessly into any setting.



## Specifications

Materials	Galvanized steel - aluminium casting
LED Modules	Interchangeable Modules - IP67 and IK09
Mounting Arm	Galvanized steel slip fit mounting arm - Available in single or twin and with backlights
Lighting Efficiency	> 190 lm/W
Color Temperature	2000K - 2200K - 2700K - 3000K - 4000K
Uplight	0%
Optics	Type II - Type III - Type IV - Type CW
Customization	Colors



# FOLLOW UP COLUMN

## A Luminous, Architectural Presence

The **FOLLOW UP** column creates an **airy, graphic silhouette** that punctuates cityscapes and urban environments. With its dual function of lighting and RGB marking, it enhances living spaces both day and night.

### Characteristics

- Powder-coated aluminum
- Corrosion-resistant
- High-efficiency solar cells
- Integrated RGB path marking
- Remote programming and control
- Scenario personalization
- Motion sensor



#### Available in 7 colors



Titanium Sheen



Oxide Earth



Golden Sand



Green Canopy



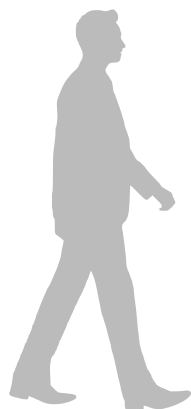
Stone Glow



Concrete Mist



Black Shadow



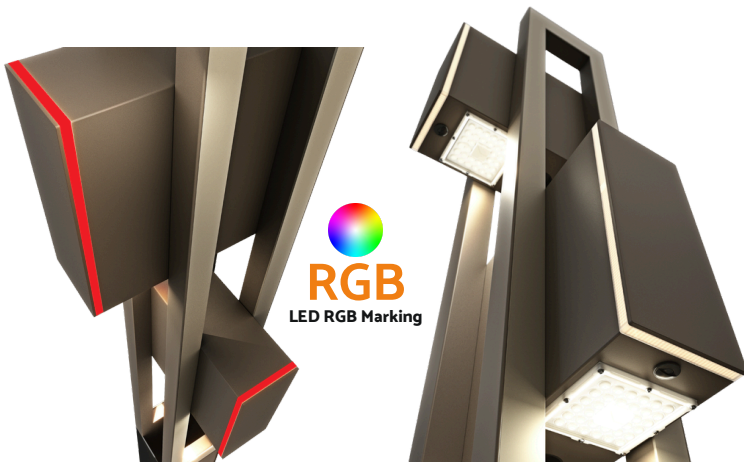
# Follow Up



## FOLLOW UP

The FOLLOW UP elevates environments day and night with **seven architectural colors** and versatile configurations.

**Autonomous and refined**, it integrates effortlessly into any project while adapting to the needs of modern public spaces.





# FOLLOW L BOLLARD

## Elegance And Performance

Designed as a true lighting feature, the **FOLLOW L BOLLARD** showcases a style that is both **understated and contemporary**. Its **vertical silhouette and geometric lines** allow it to integrate naturally into a wide range of environments with elegance. Available in a selection of subtle, architectural-inspired tones.

### Characteristics

- Powder-coated aluminum
- Corrosion-resistant
- High-efficiency solar cells
- Integrated RGB path marking
- Remote programming and control
- Scenario personalization
- Motion sensor



#### Available in 4 colors



Titanium Sheen



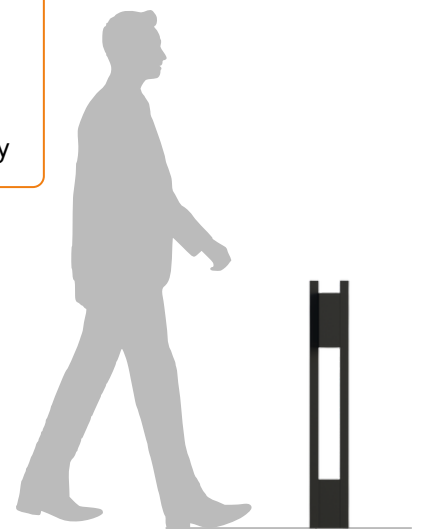
Oxide Earth



Golden Sand



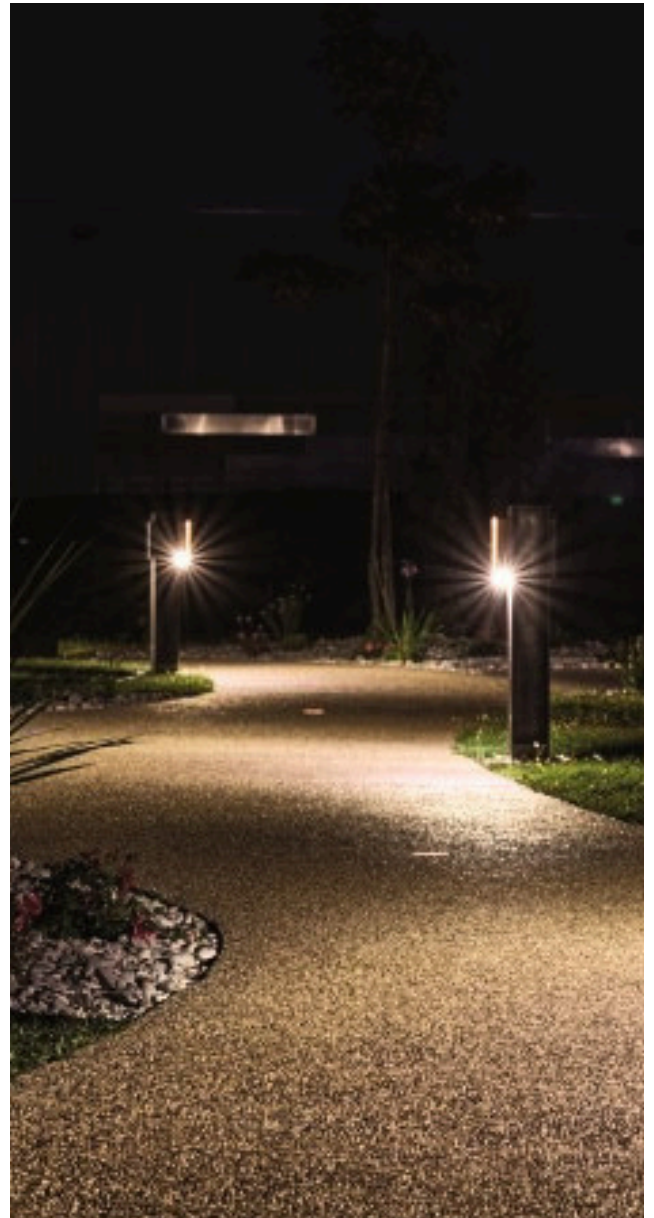
Green Canopy



# Follow L

## FOLLOW L

Beyond its sleek design, FOLLOW L **combines form and function** with integrated technology that ensures reliable, energy-efficient performance while maintaining a discreet presence. Designed for flexibility and easy deployment, it offers a versatile solution for projects seeking **aesthetic consistency and long-term performance**.



  
**RGB**  
LED RGB Marking



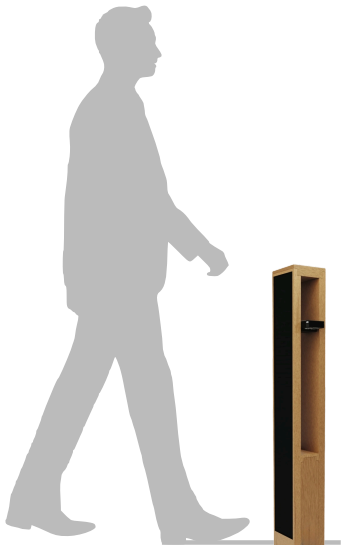
# OKO BOLLARD

## Refined Wooden Design Inspired By Nature

The **OKO BOLLARD** embodies the perfect balance between **natural aesthetics, high-performance, and environmental responsibility**. Designed for soft, long-lasting lighting, they feature a **solid IROKO wood body** sourced from sustainably managed forests, are naturally rot-resistant, and highly durable in outdoor conditions.

### Characteristics

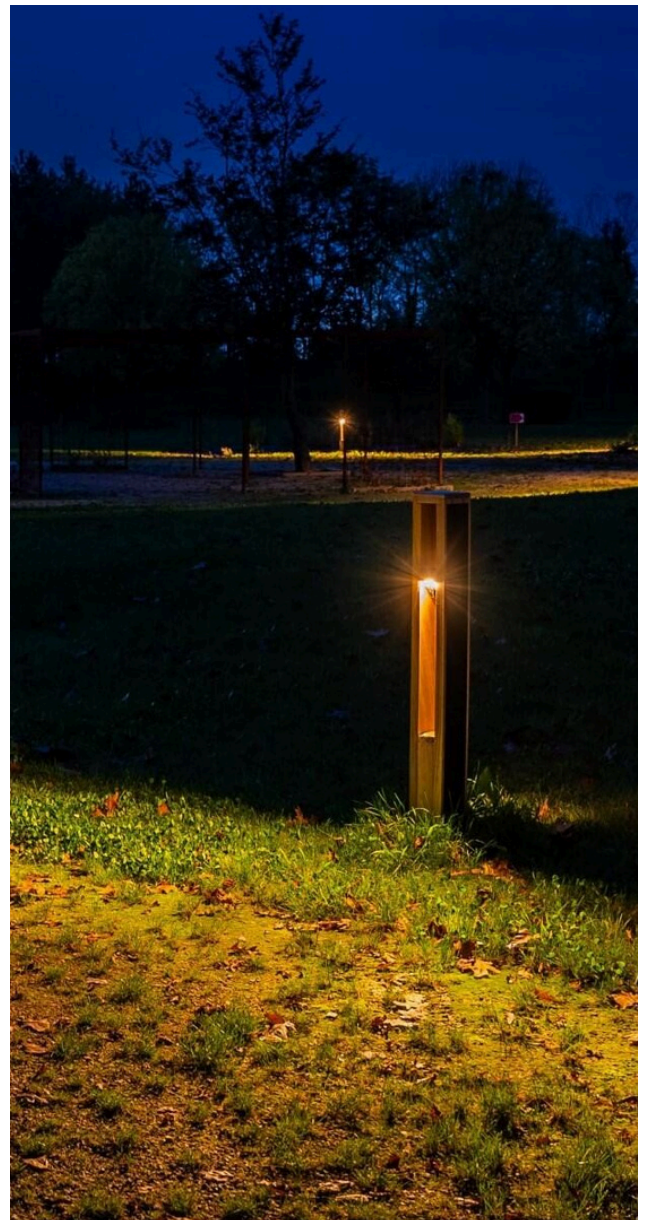
- Solid FSC certified IROKO wood frame
- Rot-resistant
- High-efficiency solar cells
- Remote programming and control
- Scenario personalization
- Motion sensor





## OKO

Beyond its natural materials, OKO delivers dependable, low-impact lighting through integrated solar technology designed for long-term performance. Its **simple installation and durable construction** make it a practical solution for enhancing outdoor spaces while **preserving their original character.**





# BRUT BOLLARD

## Elemental And Robust

With its decarbonized concrete body, the **BRUT BOLLARD** blends naturally into urban environments. Its dual function of lighting and beaconing makes it ideal for soft mobility areas and public spaces.

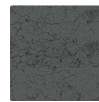
Available in two distinct finishes, it combines **performance, durability, and aesthetic versatility.**

### Characteristics

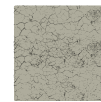
- High-performance, fiber-reinforced concrete (UHCP)
- Impact resistant
- High-efficiency solar cells
- Integrated RGB path-marking
- Remote programming and control
- Lighting scenario personalization
- Motion sensor



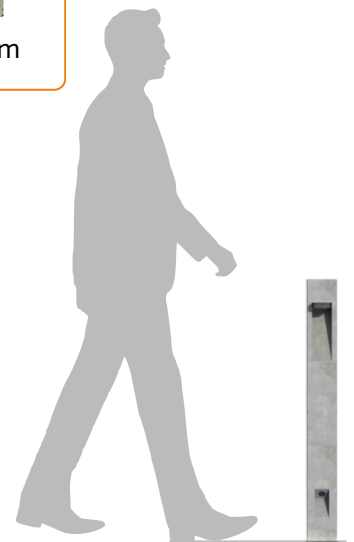
Available in 2 colors



Starry Grey



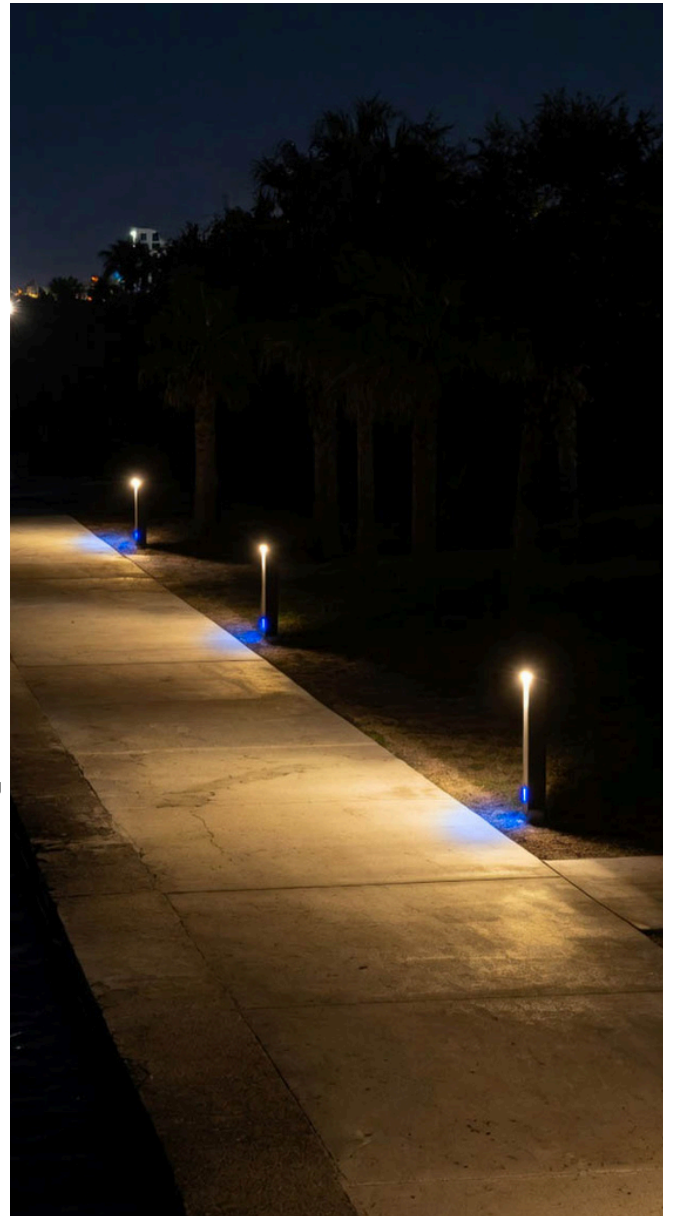
Sandstorm



# Brut

## BRUT

Beyond its material strength, BRUT delivers reliable, low-impact lighting through integrated solar technology **designed for long-term performance**. Its robust design makes it ideal for high-traffic areas, **enhancing safety and visibility** while maintaining a cohesive urban aesthetic.



  
**RGB**  
LED RGB Marking

# CRYSTAL STUD

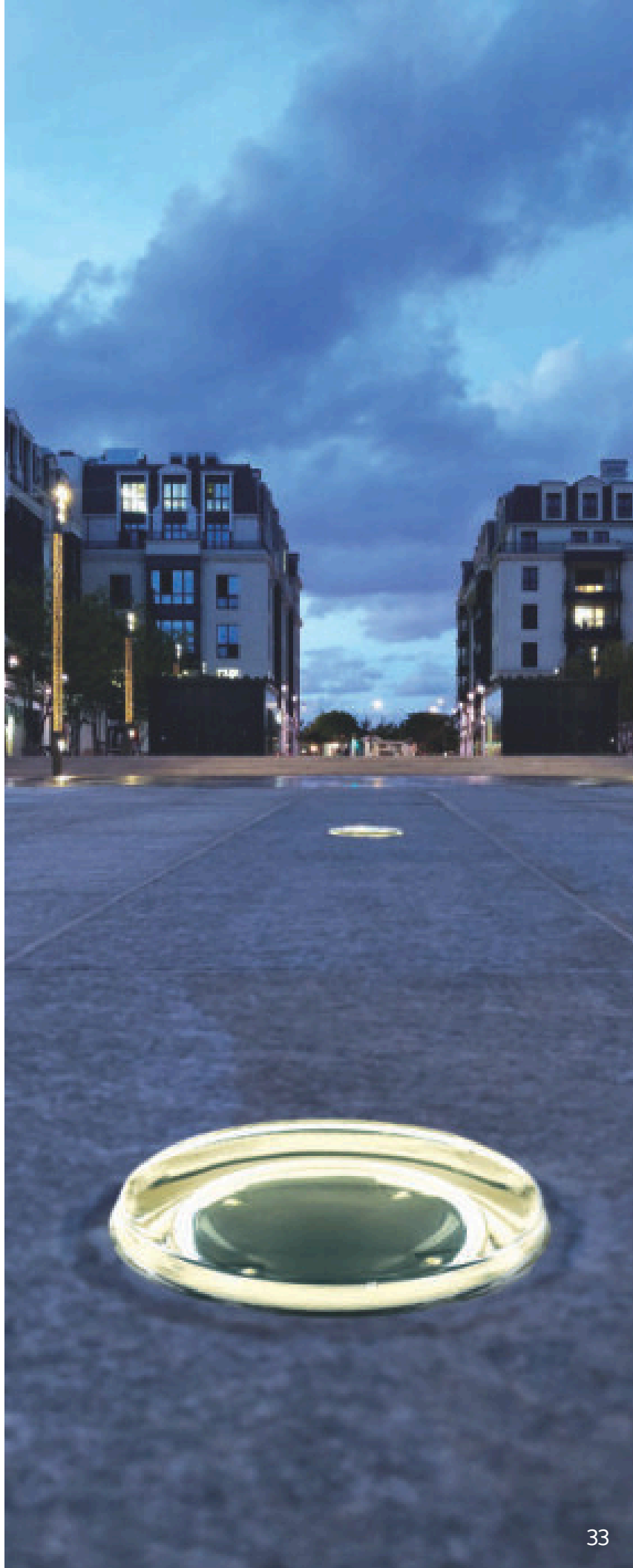
## Architectural Signature

**CRYSTAL STUD** is a solar-powered luminous stud designed as a precise tool for city-centric scenography. Delivering controlled, adaptable lighting, it allows intensity, rhythm, and color to be composed to suit each environment, **transforming pathways and spaces into intentional visual experiences.**

More than a simple light point, **CRYSTAL STUD** becomes part of the **architectural language, revealing lines, enhancing volumes, and reinforcing the identity of a site.**

## Characteristics

- .9 in tempered glass and aluminum construction
- RGB marking
- Remote programming and control
- Lighting scenario personalization
- No cables or electrical connections
- 4.5 in diameter

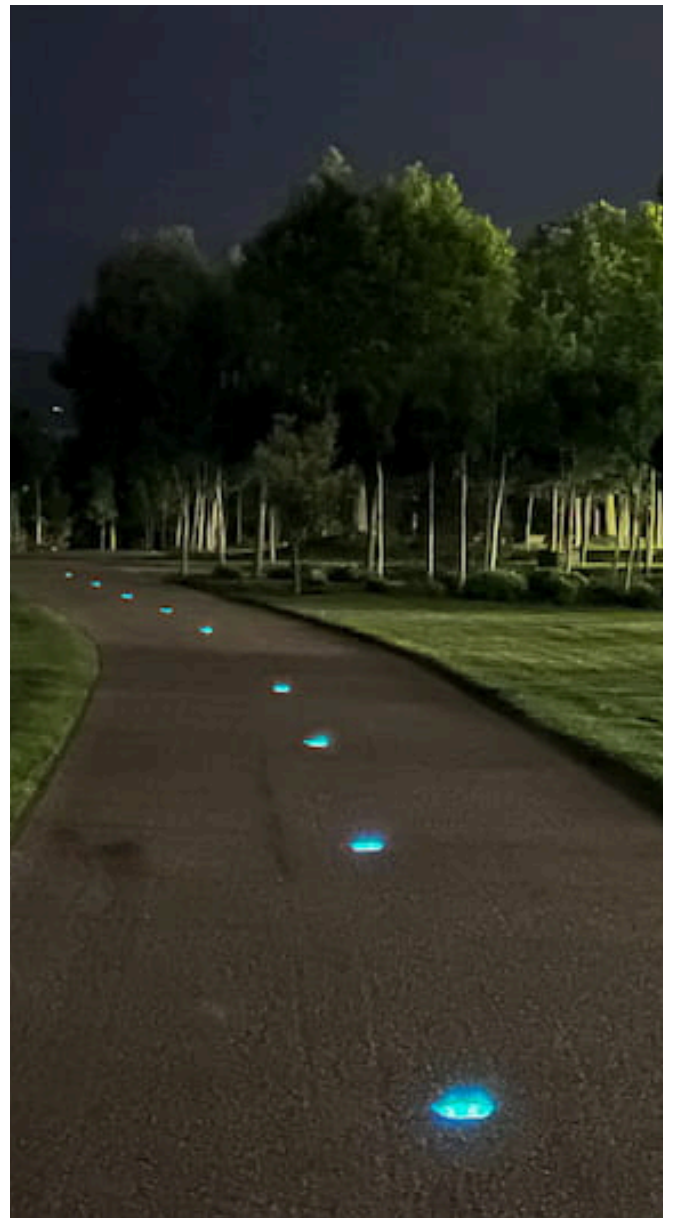


# Crystal Stud



## CRYSTAL STUD

CRYSTAL STUD does more than illuminate a space, it **reveals, enriches, and transforms** every environment. CRYSTAL STUD combines **polished design, high-performance lighting, and sustainability** to deliver subtle, controlled illumination in any setting.



  
**RGB**  
LED RGB Marking



# WHY CHOOSE FONROCHE LIGHTING AMERICA ?

The Most Experienced Solar Lighting Partner In The USA

## Who Are We?

Fonroche Lighting America is headquartered in Fort Worth, TX and operates regional service centers in Los Angeles, Boise, Charlotte, Orlando, Atlanta, Dallas, and Phoenix.

The manufacturing and distribution facility in Fort Worth is a 50,000 square foot facility with bays, loading docks, and outdoor storage. The capacity of this facility is 1000 solar lighting systems per week.



### Map Key

- Headquarters
- Service Center



**400+**  
EMPLOYEES

**8000+**  
CITIES SERVICED

**\$100m**  
SALES IN 2025

### Reliability

Guaranteed reliability of our products, and iconic projects worldwide and across the US

### 365 Nights

We are the only ones to guarantee 365 nights of lighting per year

### Expertise

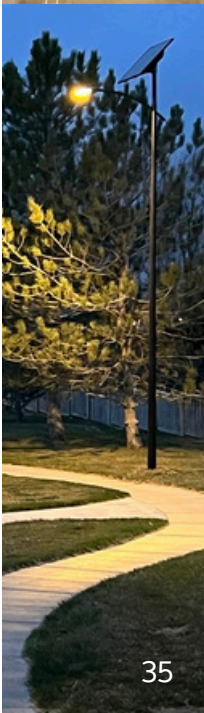
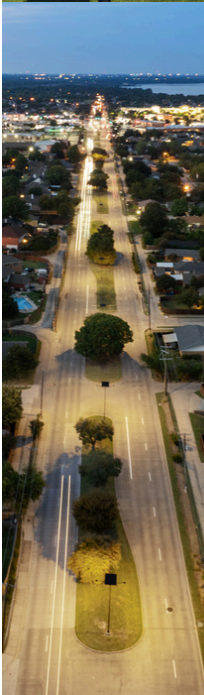
For our unique expertise in design innovation, manufacturing, logistics, and training

### World Leader

Over 20 years of experience in over 50 countries worldwide



Our **global HQ** is based in Southwest France and is where we design and develop the technology behind our autonomous solar-powered streetlights.





MORE INFORMATION AT:



☎ 339-225-4530  
✉ [sales@fonroche.us](mailto:sales@fonroche.us)

**FONROCHE LIGHTING AMERICA**  
2224 SE Loop 820, Bldg C | Fort Worth, TX 76140

Follow Us on Social Media

